
How to Search HistoricPlacesLA A Step-by-Step Guide

Los Angeles City Planning
October 2023



Table of Contents

01	OVERVIEW OF HISTORICPLACESLA	page 1
-----------	-------------------------------------	--------

02	THE HISTORICPLACESLA INVENTORY	page 2
-----------	---------------------------------------	--------

03	SEARCHING HISTORICPLACESLA	Address Search	page 3
		Resource Search	4
		Record Types	5
		Term Matches	6
		Concepts	6
		Text Search	7
		Results	7
		Resource Reports	8

04	USING THE INTERACTIVE MAP	Filter	page 9
		How to Refine a Filter	9
		Basemap	9
		Overlays	11
		Legend	12

05	FREQUENTLY USED SEARCHES	page 12
-----------	---------------------------------	---------

06	MORE ABOUT HISTORICPLACESLA	page 15
-----------	------------------------------------	---------

01 Overview of HistoricPlacesLA

HistoricPlacesLA is an online tool created specifically for the **City of Los Angeles** to inventory, map, describe, and help protect significant cultural and historic resources. HistoricPlacesLA showcases the diversity of the city's historic resources, including architecturally significant buildings, places of social importance, historic districts, bridges, parks, landscapes, and more.

- HistoricPlacesLA is home to the City of Los Angeles's comprehensive inventory of historic resources.
- HistoricPlacesLA offers a variety of powerful but easy-to-use search tools to locate and retrieve information from the inventory.
- Inventory entries can be packaged into **Resource Reports** that users can download and print.



02 The HistoricPlacesLA Inventory

The HistoricPlacesLA inventory was created to document and organize information for two kinds of historic resources in the city—**Designated Historic Resources** and **Surveyed Historic Resources**—as identified by **Historic Resources Surveys** at the local, state, or national level.

Designated Historic Resources include buildings, structures, objects, sites, or districts officially designated as historic by the National Register of Historic Places, the California Register of Historical Resources, or the City of Los Angeles. Historic designations in the City of Los Angeles include both Historic-Cultural Monuments (HCMs) and Historic Preservation Overlay Zones (HPOZs).

Surveyed Historic Resources are individual or district resources identified through SurveyLA or other study officially recognized as a Historic Resources Survey. Though not all, some Surveyed Historic Resources may be Eligible Historic Resources, meaning potentially eligible for historic designation under local, state, and/or national historic preservation programs.

Historic Resources Surveys are conducted from the public right-of-way, and only properties that appear to meet criteria for local, state, or national listing are recorded. Historic Resources Survey findings are subject to updates over time as properties age, additional information is uncovered, and more detailed research and analyses are completed.

Historic resources are identified, evaluated, and/or designated according to standardized criteria for listing in the National Register and California Register, and for local designation as HCMs and HPOZs. The Los Angeles Citywide Historic Context Statement, developed as part of SurveyLA, is the framework for evaluating resources in Los Angeles for federal, state, and local designation.

Using the [Multiple Property Documentation](#) approach developed by the National Park Service, the Los Angeles citywide historic context statement organizes the themes, trends, and patterns of history shared by properties into historic contexts. The context statement also identifies and describes historic resources or property types that represent the contexts and provides specific standards for evaluating the significance for national, state, and local designation based on the **Resource Type** and its corresponding **Context, Theme, and Property Type**.

An understanding of the citywide historic context statement can be helpful when searching HistoricPlacesLA. For example, you might want to search for resources that have specific evaluation concepts (like Resource Type, Context, Theme, and Property Type) in common. To learn more about the framework, visit the [Historic Resources Surveys](#) and [Historic Themes](#) pages at the Los Angeles Department of City Planning website.

03 Searching HistoricPlacesLA

To access the search functions of HistoricPlacesLA:

- 1 Click on **Search** in the upper right corner of the HistoricPlacesLA homepage (*fig. 1*).
- 2 The next screen will display an **Interactive Map**, which will automatically include a **Heat Map** of the geographic locations for all places in the HistoricPlacesLA inventory.
- 3 Two primary search tools can be immediately identified on the page in addition to the Interactive Map: **Address Search** and **Resource Search**.

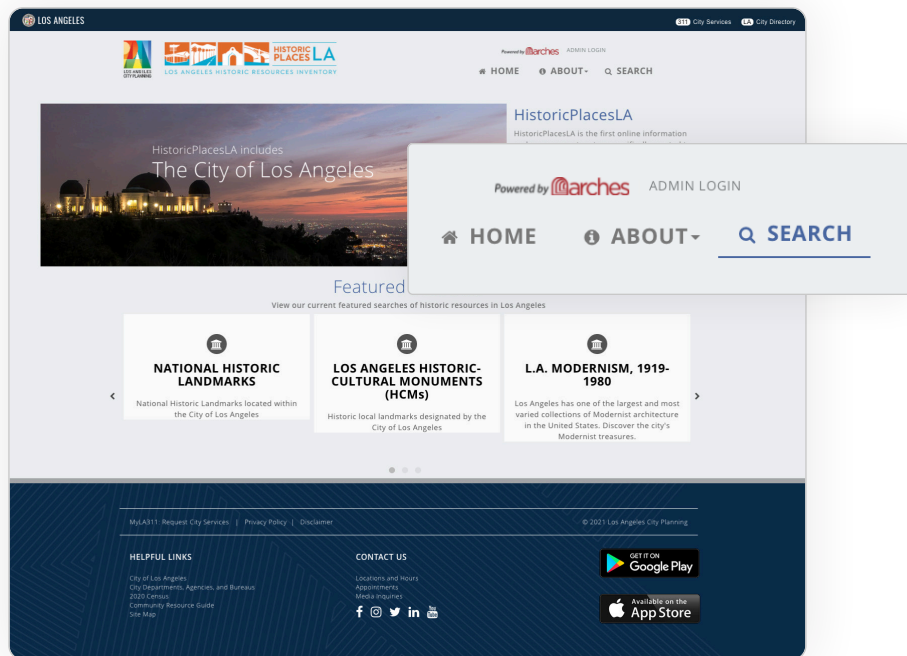


Figure 1. The HistoricPlaceLA inventory and interactive map can be accessed by clicking on Search in the upper right corner of the HistoricPlacesLA homepage.

Address Search

- 1 The **Address Search** is found in the upper right corner of the map.
- 2 Typing an address into the **Address Search** field will automatically generate a drop-down list of addresses.
- 3 Completing the address and hitting enter on your keyboard will move the map to the location of the address and drop a **Blue Pin** at that location. Selecting from one of the addresses generated on the drop-down list will accomplish the same result.
- 4 The entries previously clustered in the heat map will now appear as **Orange Markers** for specific resources in the immediate area around the location of the address.

Note: The Address Search will not change the **Results** listed to the left of the map.

Resource Search

- 1 The **Resource Search** to the left of the map allows for exploration of multiple, related places—rather than the location-based search of the Address Search (*fig. 2*).
- 2 Four primary search refinements are available with the Resource Search: **Record Types**, **Suggested Terms**, **Exact Matches**, and **Concepts**.
- 3 Entering a query into the **Resource Search** field will create drop-down lists for the following where results exist for: **Suggested Terms**, **Exact Matches** and **Concepts**. Simply entering the query or selecting the hyperlink link that generates below the query field while typing will initiate a **Text Search**.

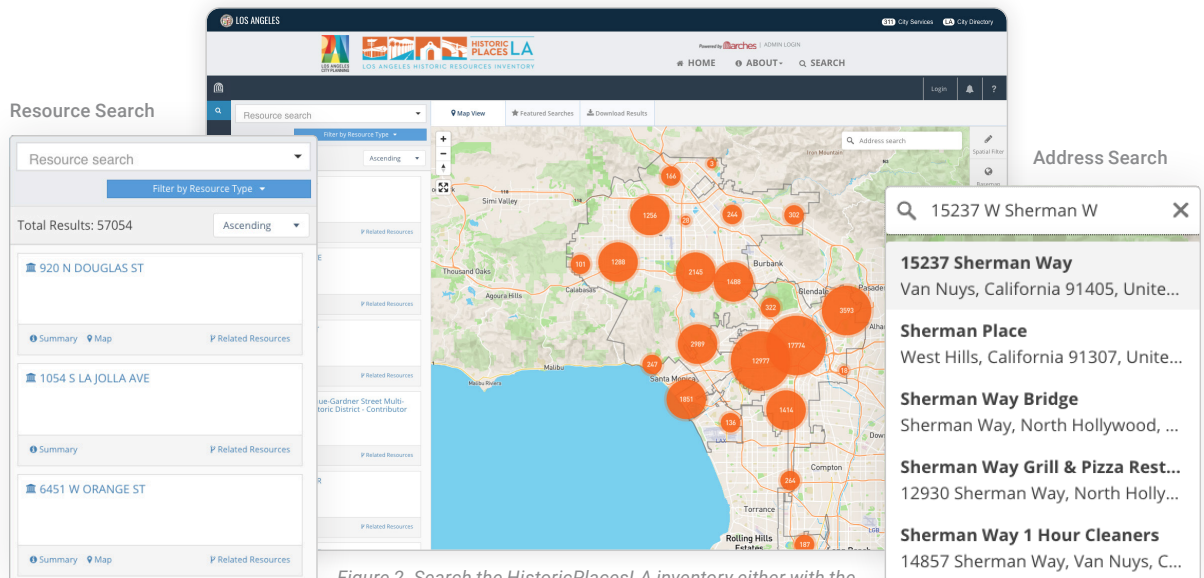


Figure 2. Search the HistoricPlacesLA inventory either with the Resource Search in the upper left of the screen shown here, or with the Address Search in the upper right.

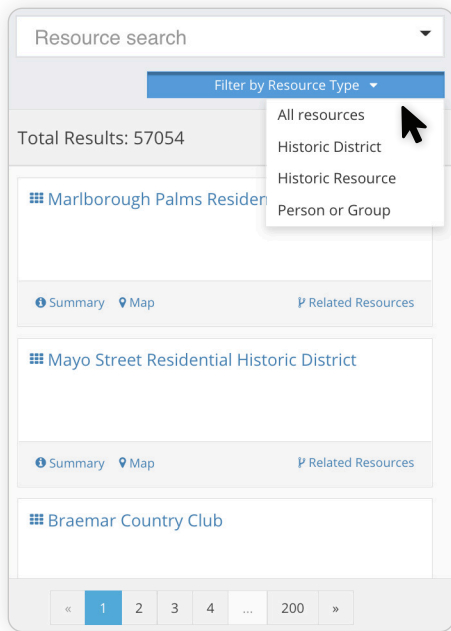


Figure 3. Use the drop down menu below the Resource Search field to limit Results to one of three Record Types .

RECORD TYPES

Each record in HistoricPlacesLA was entered as one of several **Record Types**. In the Resource Search field, Record Types include **Historic District**, **Historic Resource**, and **Person or Group**.

- 1 A default search will query from all three Record Types: Historic District, Historic Resource, and Person or Group.
- 2 To see **Results** for only one Record Type, select one of the three Record Types from the drop-down menu, without entering a query into the Resource Search field, and refined Results will be produced in a list below. The Heat Map on the Interactive Map will also adjust to the change (fig. 3).
- 3 Any search that follows will be limited to the selected Record Type.
- 4 It's also possible to refine your search by Record Type after you have entered a query.

Historic District: A significant concentration, linkage, or continuity of sites, buildings, structures, or objects united historically or aesthetically by plan or physical development. Numerous forms of Historic Districts are included in HistoricPlacesLA, including Historic Preservation Overlay Zones, California Register and National Register historic districts, and potential historic districts identified through historic resources surveys. Districts can include single or multiple parcels depending on the resource. Examples of resources recorded as historic districts through SurveyLA include properties that often span multiple parcels like bungalow courts, garden apartments, residential neighborhoods, commercial areas, large estates, school and hospital campuses, and industrial complexes.

Historic Resource: Any structure, object, site, property, or district with a special historical, archaeological, cultural, or aesthetic interest or value as part of the development, heritage, or cultural characteristics of the city, county, state, or nation. In this context, Historic Resources can include both designated resources and resources identified as eligible for historic designation.

Person or Group: An individual or organization related to the significance of a historic resource. A known architect is an example of a Person, while a known building company is an example of a Group.

Note: The complete list of Record Types, which also includes **Administrative Area**, **Historic Event**, **Information Record**, and **Historic Resources Survey**, are included in HistoricPlacesLA Resource Reports. See the "**Resource Reports Walkthrough**" for more information.

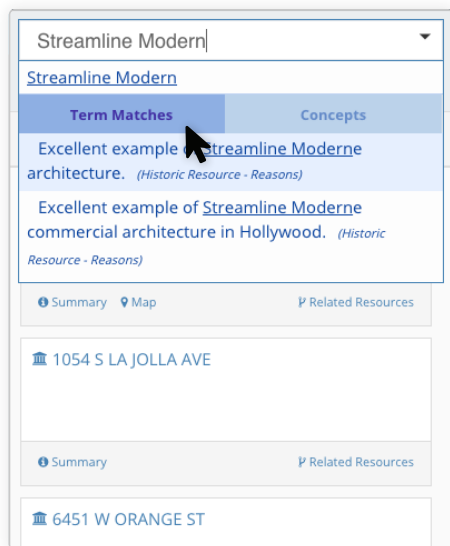


Figure 4. A list of Suggested Terms will automatically appear in a drop down menu below the Resource Search field. Click on Suggested Terms to generate the list as Results below.

SUGGESTED TERMS

- 1 While entering a query into the **Resource Search field**, a list of **Suggested Terms** automatically generates below the search (fig. 4).
- 2 The list of Term Matches includes all of the entries in the HistoricPlacesLA inventory that share words or names with the search query.
- 3 Term Matches most frequently refer to the names of **Historic Resources** or the names of a **Person or Group**. Thus, searches for names—of buildings or people—will be most effective as Term Matches. A search for a Style, such as Streamline Modern, for example, will produce numerous results by matching the words “Streamline” and “Moderne.”
- 4 Be sure to check in the **parenthesis** behind the terms in the drop-down list for the categories of each record listed as a Term Match for your search query. This information can be useful for finding the records most pertinent to your search.

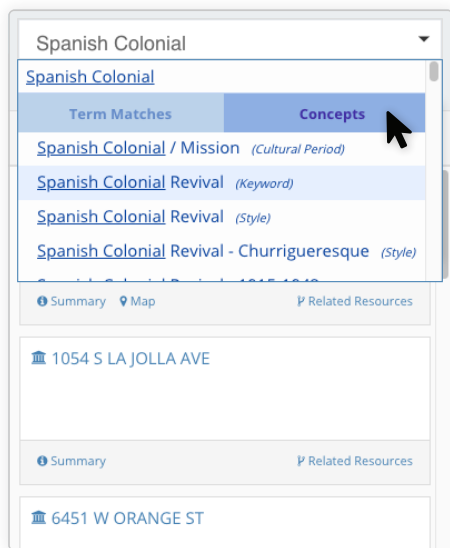


Figure 5. A list of Concepts will automatically appear in a drop down menu below the Resource Search field. Click on Concepts to generate the list as Results below.

CONCEPTS

- 1 The second of the two lists generated by a **Resource Search** query is for **Concepts**, which is accessed by typing a query and then clicking on the word “Concepts,” below the query to the right (fig. 5).
- 2 Concepts reflect the various evaluation field entries—including **Contexts, Themes, and Property Types**—that identify and record historic resources, as explained in “The HistoricPlacesLA Inventory” section of this guide.
- 3 Concept entries include **Resource Types** or **Evaluation Criteria Types**, including the useful **Context, Theme, and Property Type**. Other useful Concept categories include **Heritage Resource Type, Style, and Construction**. The Concepts list is where you’d want to look, for example, for a collection of **Results** related to a search for the term “Spanish Colonial.”
- 4 A Concepts search is likely to produce Results that can include numerous resources—such as all the resources that have been evaluated as Spanish Colonial for historic designation.
- 5 The information in the **parenthesis** indicates the Concept Type for each potential selection. This information can be useful for finding the most pertinent records.

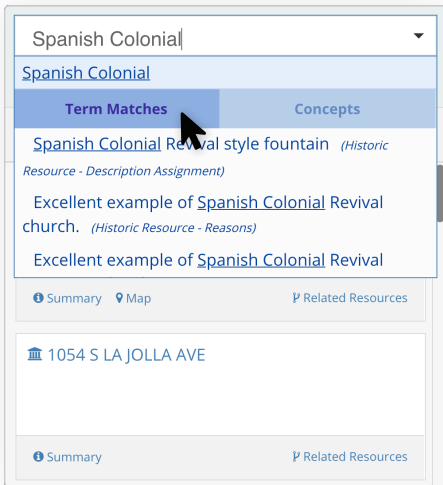


Figure 6. To complete a Text Search either enter a term and click enter OR enter a term and click on the Blue Link below the Resource Search field.

TEXT SEARCH

- 1 Another option for completing a search query is to hit **Enter** on your keyboard after typing your query.
- 2 The same result can be achieved by clicking on the **Blue Link** that will appear as you type directly below the search field (above Term Matches and Concepts) (fig. 6).
- 3 A **Text Search** will produce all of the records in the inventory that match the words in the search.
- 4 This is the broadest, most general search of the HistoricPlacesLA inventory. In the example of a search for the words “Spanish Colonial,” a text search generates all the records—all of the Historic Resources, all of the Evaluation Criteria Types, all of the Historic Districts, etc.—listed with those words.

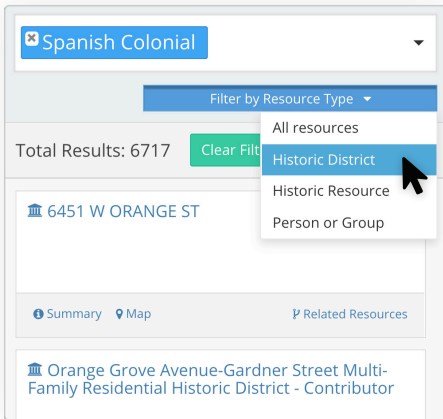


Figure 7. Filter Results by choosing a Record Type after entering any kind of a Resource Search (Suggested Terms, Exact Match, Concept, or Text).

RESULTS

A list of **Results** can be created for a **Resource Search** by three methods:

- 1 Click on one of the items from the list of **Term Matches**.
- 2 Click on one of the items from the list of **Concepts**.
- 3 Type a query into the Resource Search field and hit enter (a **Text Search**, as described above).

After completing one of those three tasks, Results will include all **Historic Resources, Historic Districts, and Persons or Groups** corresponding to the Resource Search query (fig. 7). You can filter Results to just one of these **Resource Types** by selecting from the drop down menu below the Resource Search field (fig. 8).

Note: Resource Search queries can be layered to further refine results. For instance, a search could include a query for Quonset hut (**Resource Type**) and Hollywood Community Plan Area (**Administrative Area**).

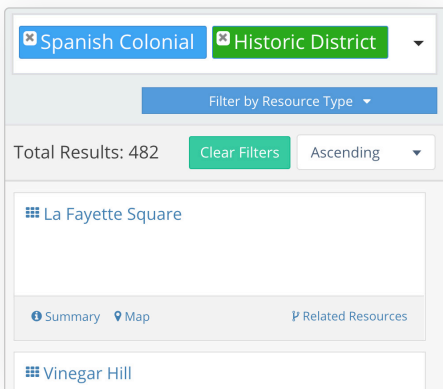


Figure 8. Results will change after selecting a Record Type to further filter the existing “Spanish Colonial” Resource Search.

Resource Reports

HistoricPlacesLA packages the available information for specific historic resources into **Resource Reports**. Resource Reports are accessible by two distinct paths in HistoricPlacesLA, depending on your search method:

- 1 On the **Interactive Map**, click on the specific **Orange Marker** representing a resource (*fig. 9*).
 - a A dialog box will open, showing the name and an image for the resource. The resource name serves as the link to a Resource Report.
- 2 Click on the resource name in the **Results** list to the left of the map, below the **Resource Search** field, to open a Resource Report for the resource.

Note:
HistoricPlacesLA has created an online **“Resource Reports Walkthrough”** and a tutorial video to provide more instruction about how to use Resource Reports.

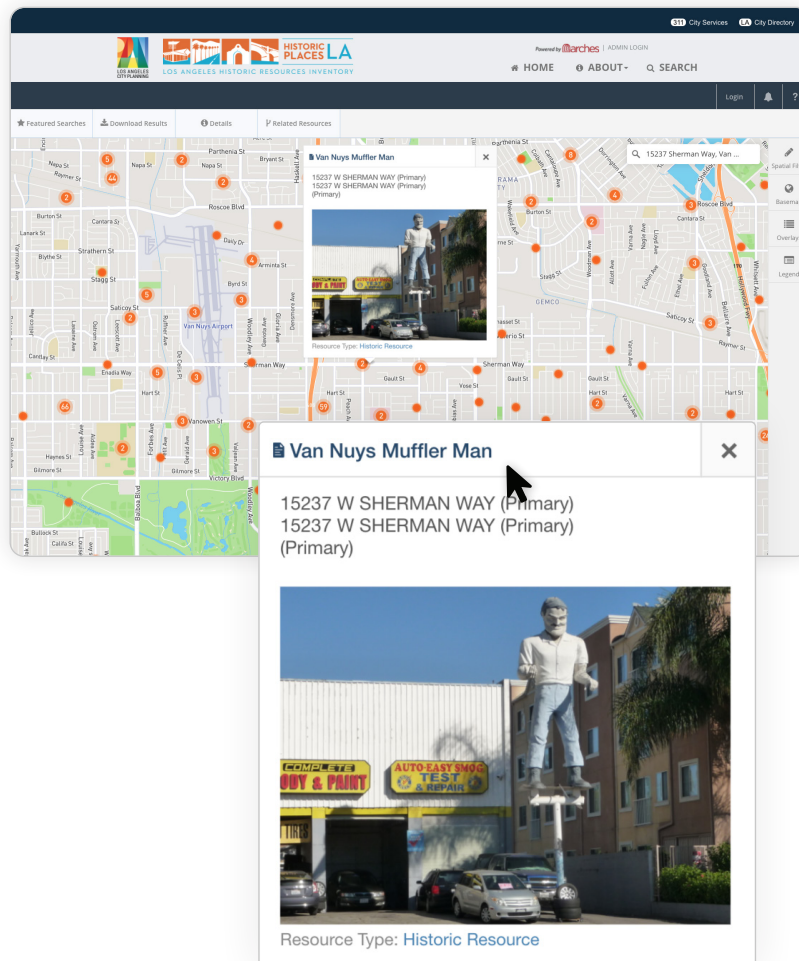


Figure 9. To access a Resource Report via the Interactive Map, click on the Orange Marker representing a resource, then click on the link in corresponding dialogue box.

04 Using the Interactive Map

Basemap

HistoricPlacesLA gives users the option to select from a variety of **Basemaps** to display while searching or exploring the **Interactive Map**. Each basemap prioritizes features like terrain, streets, or satellite images in different ways.

- 1 To explore the basemap options, click on “Basemap” to the right of the interactive map (fig. 10).
- 2 Click on any of the Basemaps listed in the menu to activate a new basemap (the menu selection will appear gray when ready to select) (fig. 11).

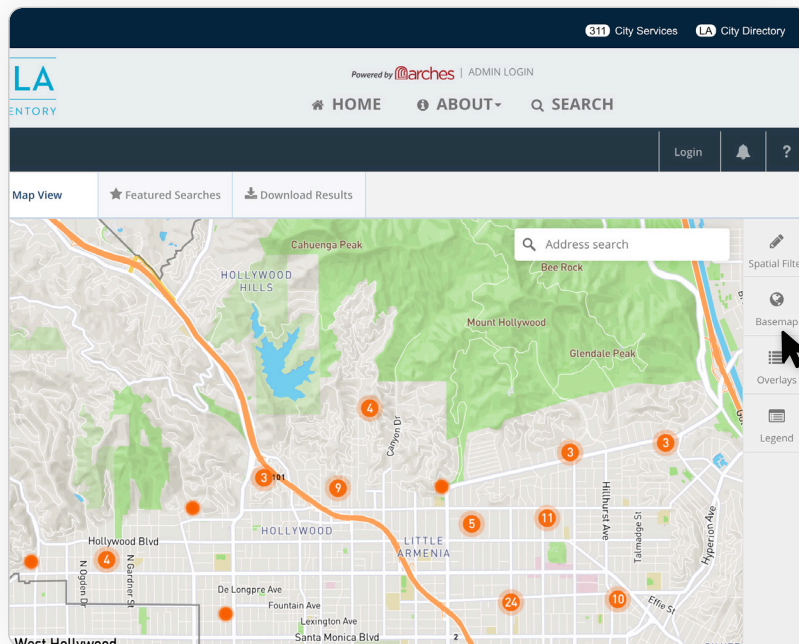


Figure 10. A choice of Basemaps can be found to the right of the Interactive Map.

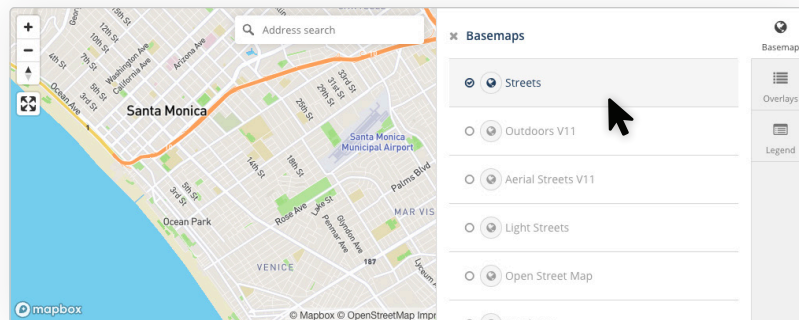


Figure 11. Choose a Basemap that works best for your interests and knowledge.

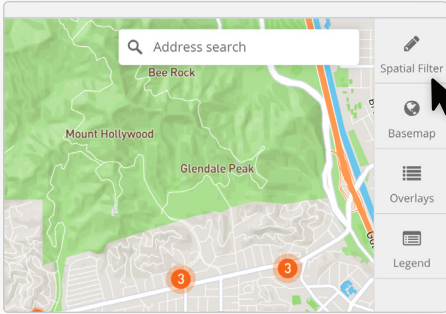


Figure 12. The Spatial Filter toolbox is found in the menu to the right of the Interactive Map.

Spatial Filter

There are other ways to filter the results of search by adjusting the **Interactive Map**, such as searching a specific geographic area, like a neighborhood, along a street or corridor, or around a specific point in the city. Each of the **Spatial Filter** options provides a different tool for focusing on specific areas within the City of Los Angeles—in a City with so many unique characteristics, these customizable Spatial Filters can be extremely helpful for searching neighborhoods, corridors, and hidden corners of the city.

- 1 From the list of menu items to the right of the map, open the Spatial Filter window that appears at the top of the list (fig. 12).
- 2 Clicking on Spatial Filter will open a **Map Search** tool that customizes search **Results** by adjusting the map. For example, users can search the area in a customizable **Buffer** around a specific point on the interactive map or draw customized search areas within or across the city’s various jurisdictional boundaries.

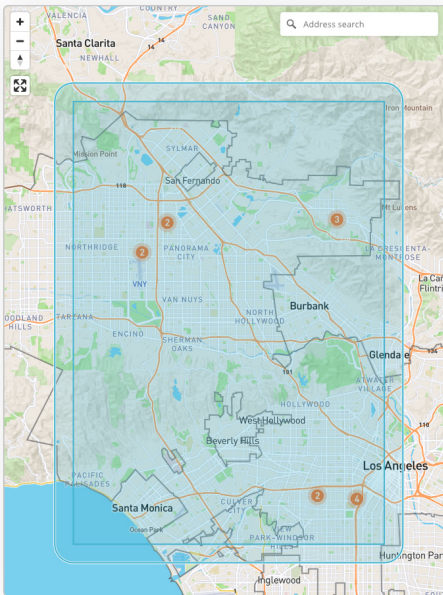


Figure 13. Using the Spatial Filter “Search By Map Extent” will produce Results from the area visible on your screen.

Methods for Searching by Spatial Filter

- 1 Zooming in on a specific area and selecting **Search By Map Extent** will filter the results to include the resources located on the portion of the map visible on your screen (fig. 13).
- 2 The **Draw a Polygon** tool focuses on a particular area on the map by drawing a **Polygon** around the desired area. After selecting “Draw a Polygon” from the menu, click once to add each corner of the shape on the map, and then click twice to close the Polygon and set the search area of the spatial filter (fig. 14).
- 3 A **Polyline** is another drawing tool for focusing a search area on the Interactive Map. After selecting **Draw a Polyline**, click once on the map and drag a line across the map. Then click twice to end the line. Adding an angle to the line will create a shaded search area.
- 4 To search around a **Point**, select **Draw a Point** from the menu, and click on the map where you want the search.
- 5 Interactive Map searches will benefit greatly from the addition of a **Buffer**, which customizes an extension of the search area beyond the space created by the Point, Polyline, Polygon, or Map Extent Spatial Filters (fig. 14).
- 6 Points and Polylines especially benefit from the Buffer tool. A Polyline, for example, can be drawn along a street with a Buffer added to capture properties on both sides of the street or surrounding blocks.

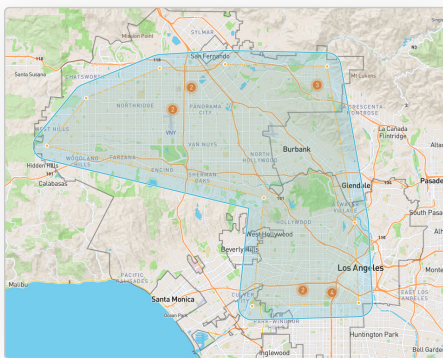


Figure 14. A Polygon Spatial Filter search, shown here with the addition of a Buffer, allows a customizable search area that can be shaped around neighborhoods, watersheds, freeways, or any of the many unique features of the City of Los Angeles.

Overlays

Overlays refine the various **Markers**, **Heat Maps**, and jurisdictional boundaries that appear on top of a selected **Basemap**.

- 1 Open the Overlays window, located to the right of the map (fig. 15).
- 2 Click anywhere in the menu to activate or deactivate Overlays (the menu selection will appear gray when ready to select). It is possible to activate multiple Overlays at the same time (fig. 16).
- 3 Changing the Overlays on the map will not change the **Results** of a search query.
- 4 The only Overlays that will change as you search or move around the map are the **Historic Resource** and **Historic District** overlays.

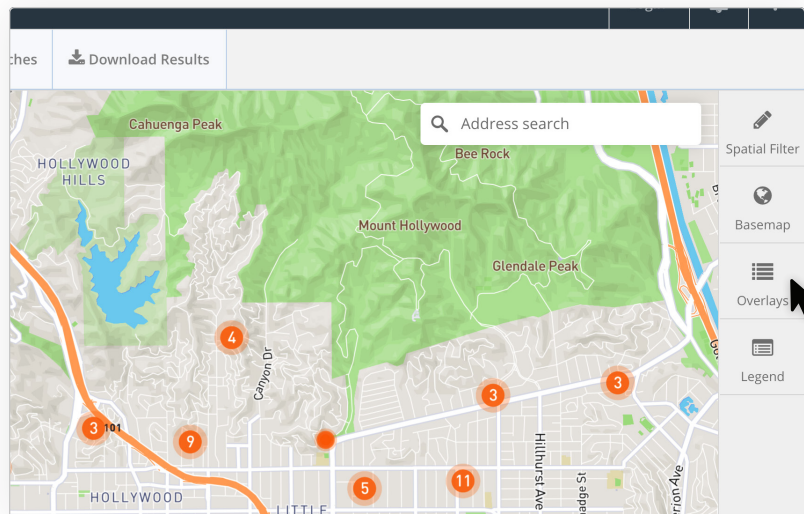


Figure 15. A list of Overlays can be found in the menu to the right of the Interactive Map.

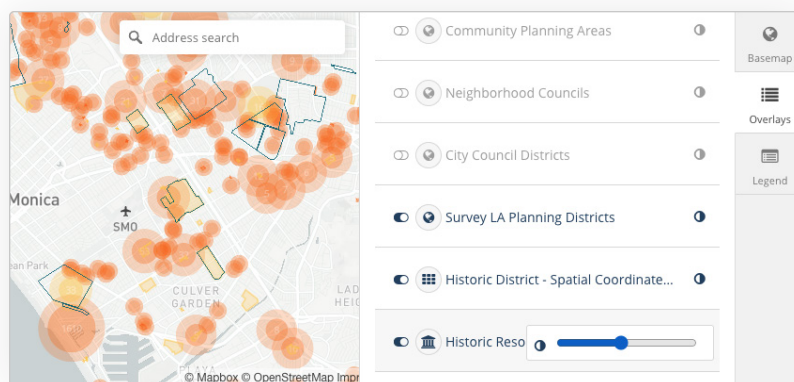


Figure 16. Control the type of information included on the map by activating or deactivating choices from the Overlays menu. Multiple Overlays can be activated at the same time.

Legend

- 1 Clicking on **Legend** to the right of the map provides a compact listing of the active Overlays on the interactive map.

05 Frequently Used Searches

How to identify whether a property is eligible for historic designation or is already designated as a historic resource

- 1 Enter the address of the building or property into the **Address Search** field in the upper right corner of the map.
- 2 If no resource appears on the map, the property has not been surveyed or identified as eligible for historic **designation**, nor has it been Designated as historic.
- 3 If an **Orange Marker** appears at the location, click on the marker to open a dialog box for the resource. Verify that it is the correct address and click on the resource name to open a **Resource Report**.
- 4 Under **Evaluation Details**, find the **California Historical Resource Status Code** for the resource (*fig. 17*). The [Historical Resource Status Code/s](#) assigned to a historic resource denote its designation or eligibility for designation under local, state, or national historic preservation programs.

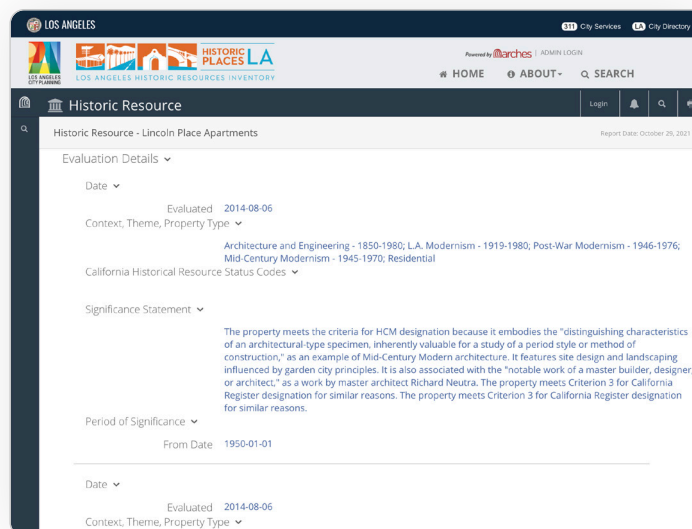


Figure 17. California Historical Resource Status Codes, which communicate the designation or eligibility of a Resource can be found in the Resource Report under Evaluation Details.

How to search for historic resources associated with a particular context, theme, or property type

- 1 Enter an **Resource Search** query related to your interests to the left of the map. (e.g., Colonial Revival, preconsolidation communities of L.A., or Quonset huts).
- 2 Click on the underlined text above **Suggested Terms**, **Exact Matches**, and **Concepts** to produce a **Text Search** or select and click an entry from the **Results** automatically generated below Suggested Terms, Exact Matches, and Concepts.
- 3 Selecting an entry below Concepts categorized as **Evaluation Criteria Type** will produce a list of **Results** based on the **Context, Theme, or Property Type** selected.
- 4 The entire list of Results can be downloaded by clicking on the **Download Results** in the middle of the screen, above the map.
- 5 Choose from a number of data formats for downloading, depending on your need.
- 6 Click on an entry in the Results list or on the specific resources shown on the map to generate a **Resource Report** with more detail about the historic significance of the resources related to your interests.

Note: **Featured Searches** can be accessed from the tab above the interactive map to provide examples of the search queries that produce Results for multiple resources related by geography, designation status, context, style, & more.

How to search for historic resources related to a particular person, architect, organization, builder, company, firm, etc.

- 1 Enter a query in the **Resource Search** field to the left of the map (e.g., an architect, such as Paul Revere Williams or Julia Morgan; a company, such as A.C. Martin and Associates; or the name of a builder or developer, such as Florence Casler).

Click enter to produce a keyword search, or select from the automatically generated lists of **Results** below **Suggested Terms**, **Exact Matches**, or **Concepts**.

- 2 Because Suggested Terms, Exact Matches correlate to the names and text within a resource record, selecting an entry from the Suggested Terms list will produce a collection of Results most useful for this type of search. If applicable, the Results will include various resources which may be related by its associated architect, company, or builder.

- 3 The entire list of Results can be downloaded by clicking on the **Download Results** in the middle of the screen, above the map (fig. 18).
- 4 Choose from a number of data formats for downloading, depending on your need (fig 19).
- 5 Click on an entry in the Results list or on the resources shown on the map to generate a **Resource Report** with more detail about the historic significance of the resources related to your interests.

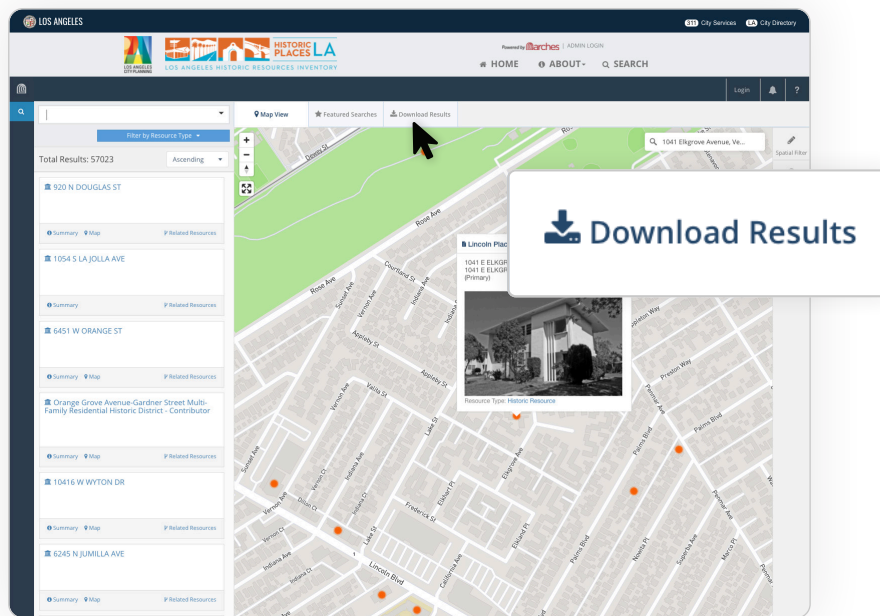


Figure 18. Click on Download Results to produce data for all Resources appearing in the Results list.

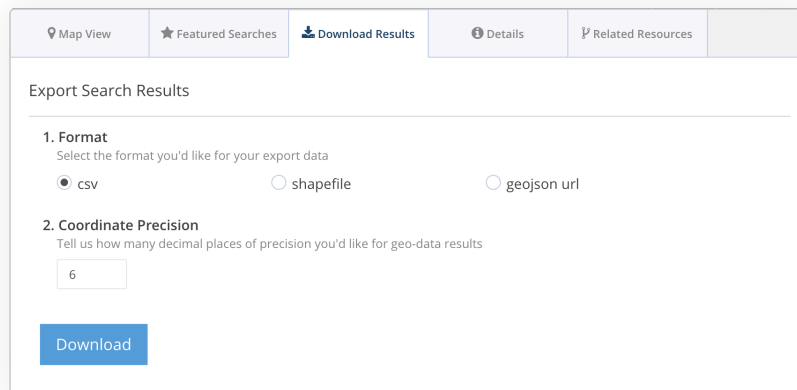


Figure 19. Multiple data formats are available for downloading, depending on your need.

06 More About HistoricPlacesLA

HistoricPlacesLA is L.A.'s customization of Arches, an open source software platform developed by the Getty Conservation Institute and the World Monuments Fund to help cities and organizations manage cultural heritage data.

Much of the data to be discovered and explored with HistoricPlacesLA was collected by SurveyLA, a citywide historic resources survey that systematically identified and documented Los Angeles's cultural heritage resources. Between 2010 and 2017, SurveyLA teams conducted field inspections throughout the city to identify the architectural, physical, and visual characteristics of the city's built environment, while also assessing the impacts of changes or alterations to buildings and documenting the current condition of buildings and sites.

Certified Local Government Grant Funding Statement

The activity which is the subject of this step-by-step guide has been financed in part with Federal funds from the National Park Service, Department of the Interior, through the California Office of Historic Preservation. However, the contents and opinions do not necessarily reflect the views or policies of the Department of the Interior or the California Office of Historic Preservation, nor does mention of trade names or commercial products constitute endorsement or recommendation by the Department of the Interior or the California Office of Historic Preservation. Regulations of the U.S. Department of the Interior strictly prohibit unlawful discrimination in departmental Federally assisted programs on the basis of race, color, sex, age, disability, or national origin. Any person who believes he or she has been discriminated against in any program, activity, or facility operated by a recipient of Federal assistance should write to:

Director, Equal Opportunity Program
U.S. Department of the Interior, National Park Service
P.O. Box 37127, Washington, D.C. 20013-7127

